

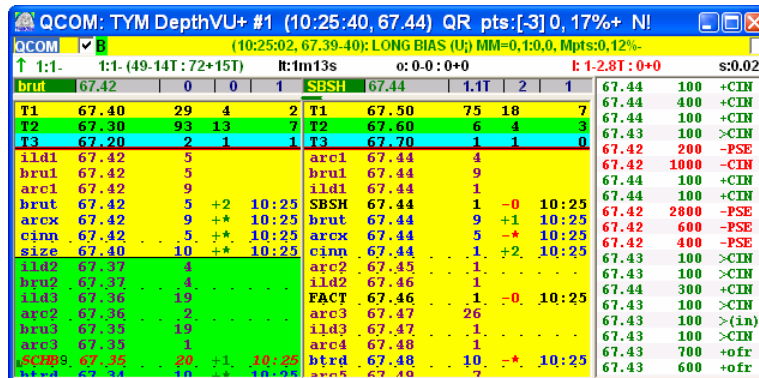
**tymoraPRO** was created to serve and fulfill professional traders' unique wants, needs, and requirements. **tymoraPRO** is the next generation "Best of Breed" trading platform created to provide trading and decision support capabilities not available in any other trading system. It provides advances in Order Execution, Portfolio Monitoring, Simulated "Life-Like" Trading, Trading Alerts, and Asset Statistics. **tymoraPRO** also provides unique Participant Tracking and Advanced Analytics, Charting Algorithms and Studies, as well as Sophisticated Predictive Logic and Trend Identification in order to guide traders to the best trading opportunities. It studies every trade, bid, offer, and even how other Players "move". **tymoraPRO** is the ultimate "Tape Reading" tool for assessing the technical and psychological make-up of the market and its participants, and it helps you "see" what everyone else is thinking...

**tymoraPRO** reveals opportunities moment-by-moment so you can focus on trading the best setups as they occur.

## Features of **tymoraPRO**

The following list is but a small representation of the type of proprietary features and trading data that is supplied and referenced for users of the **tymoraPRO** trading environment:

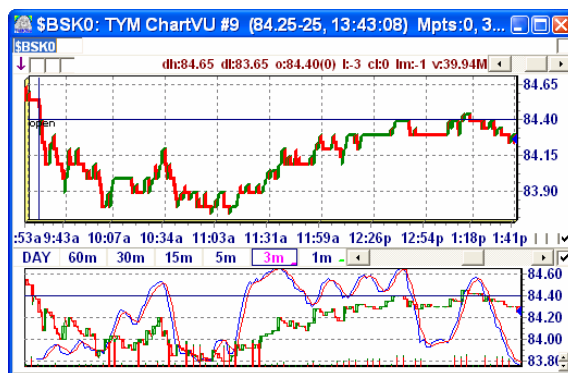
- Thousands of Real-Time HIGH-PROBABILITY Trading "Opportunities" Provided Every Day, Generated by Scanning Nearly 2,000 Listed and NASDAQ Stocks, electronic futures, and forex.



- Order Entry, Alerts, and Opportunities can additionally be communicated to Trader utilizing **tymoraPRO**'s built-in voice/speech processor, as well as overlaid onto **tymoraPRO**'s proprietary charts.
- **tymoraPRO** is also invaluable for trading Futures, e-Mini S&P 500 and Nasdaq 100 Futures, and Foreign Exchange. It can display and process any Depth-of-Book data

source (ECN Books, Exchange Depth-of-Books, Firm's Internal Order Books) in a combined Montage.

- Most trading systems are based on simple indicators, volume, and charting patterns, and process little more than recent time & sales data consolidated into bar charts. In **tymoraPRO**, opportunities are calculated through a highly complex algorithmic process that takes into account every facet of the data presented (such as Time&Sales, participant, and depth data), all in real-time, to provide 1000's of High-Probability BUY or SELL opportunities every day.
- **tymoraPRO** can be utilized to identify new trading opportunities in different stocks and/or to trade a single stock or group of stocks.
- Basket Trading feature enables the Trader to consolidate multiple trading signals across several assets and provides a new weighted trading opportunity. Baskets can also be charted, and entered into the Order Entry Manager for Automatic Execution. Consolidation of signals can provide even higher accuracy than individual signals, and allows for easy implementation of sector-based trading styles.



- On the Back-End, Complex Formulas Calculate the Top 10 Market Makers and Their Activity at Multiple Price Levels. The Trader is Presented the Current Trading Day's Top 10 Market Makers and Their Calculated Trading Activity in the Stock (Heavily Long, Long, Short, Heavily Short). This data is updated dynamically moment-to-moment. The Trader is also shown the previous day's Market Maker Rankings for comparison to today's controlling interests.
- Provides Intraday Alerts that Informs Traders of Any Event that May be of Significance in Identifying the Next Move or Reversal:
  - When a team of Market Makers has accumulated or distributed a significant quantity of stock at a particular price level.
  - Extended Consolidation and Previous Day and 52-Week High/Low Break-Outs.
  - When a Top 10 Market Maker holds or retreats from control in a particular stock.
  - When a Top 10 Market Maker attempts to repeatedly control a particular price level.
  - When a team of Market Makers attempt to Trick other Traders and Quickly Shift Their Positions on the Montage.
  - Any stock that is identified as having entered into a strong trending phase and how far it is currently extended on a moment-by-moment basis.
  - Many other powerful alerts, including CUP formations, Order Imbalances, Range Contraction BreakOUTs, Trend and Support/Resistance Auto-TrendLine Identification and CrossOver Alerts on Multiple Timeframes, Cycle-Optimized

Overbought and Oversold Indications on Multiple Timeframes, and the ActiVU display provide alerts to stocks that are about to move, continue a current move, or face a reversal. **tymoraPRO** will also identify if a stock on the move had any News Headlines associated with it.

- Specialized Alerts, Indications, and Tools for Identifying Panic Market Trading Conditions and Their Potential Reversal Points.
- Pivot Points 8-levels Deep and Trading Zone Support/Resistance Probability Analysis.
- Indicates Low Float Opportunities and Past Market GAPS being closed
- Proprietary TradeSpike alerts identify anomalous “shakeout” and panic trading activity
- Alerts on unusual trade and volume activity occurring at a particular time, normalized by time of day.
- Trading Range Break-Out Points of Last Stock Float Turn Over Cycle.
- Additional valuable alert characteristics presented. For example, “Stock is Trading Near its High after breaking its Previous Day’s Low”.
- Alerts on Stocks that are about to go Ex-Dividend or have Earnings Released.
- Real-Time Alerts on Potentially Stock-Moving SEC Insider Trading Filings and Changes in Institutional Portfolio/Position Filings, as well as historical insider performance statistics
- Real-Time Alerts on Stock Halts and Expected Times that Trading will Resume.
- Simultaneous Scrubbing of Multiple News Sources over the Internet to identify any news releases relevant to the assets being traded with optional auto-refresh.

**Tymora DataVU (Tot:40) TIBX -- MultiVUs:StSig, GotNEWS:10:30a**

GetNEWS | Note | TIBX StatsVU+ on 06/23 at 10:30a

AvgDayVol = 1.31M; AvgDayRng = 0.37; AvgTrdTm = 5s; AvgTrdSz = 3107; TV = +165.40T'  
 LevSize = 0.02; AvgLevMove = 8; MaxLevMove = 18; AvgLevRetMove = 2  
 AvgMMSpread = +0.27; ValueArea = 7.30 to 7.49; LevPriTrndStr = +3; MajorLevPTS = -2  
 IntraMktCorr = \$COMPX=-24%,36%av \$INDU=62%,21%av \$SPX=-6%,26%av \$NDX=-28%,40%av  
 TopRankedMMs = TWPT-r=COWN-r=UBSW-r=WCHV+==NITE-r MLCO==SCHB-r FACT-r=MSCO+==TMBR-r  
 PrvDayTopRankedMMs = TWPT-NITE=UBSW-SCHB+COWN+  
 KeyPricePoints(<=Bid) = 7.38 7.36 +7.30  
 KeyPricePoints(>=Off) = 7.40 7.44 7.56 7.58 7.60 +7.63 7.66 7.80 7.84 7.88 7.92 8.00 8.04 8.08  
 PivPoints = S5=6.70 S4=6.83 S3=7.03 S2=7.16 S1=7.36 P=7.49 R1=7.69 R2=7.82 R3=8.02 R4=8.15 R5=8.35  
 ChartTrends = Day(Op-) 60m- 30m- 15m- 5m+ 3m+ 1m+ (35% BEARISH)  
 LrgBlks = 50.01@7.38(10:29); 50.01@7.38(10:27); 21.0T@7.34(10:24B); 14.6T@7.40(10:17); 15.0T@7.42(10:09)  
 MultiVUs = StSig; VWAP = -7.41; 200DaySMA = +7.16; 50DaySMA = -7.93; 20DaySMA = +8.06  
 StkFloat = 163.90M; ShrtInt = 5.68M; PctShrt = 3.47%; Earnings = 06/17/2004  
 Inside = 7.39 (2.5T) x 7.40 (1.1T); Spread = 0.01; UpBid; Last = 7.40; DayVol = 874T[x0.7]; DayRng = 0.16[x0.4]

06/21, 07:55AM, BusinessWire, R4 Global Addresses Progress in RFID Technology Adoption at Bear Stearns Technology Confer  
 06/21, 06:00AM, PR Newswire, TIBCO Software Inc. Reaches Milestone in Financial Services Sector With New Enterprise-Class  
 06/18, 07:14PM, TheStreet.com, The Dow Ekes Out Another W  
 06/18, 12:17PM, SEC Edgar, TIBCO SOFTWARE INC Filed a FOR  
 06/18, 12:16PM, SEC Edgar, TIBCO SOFTWARE INC Files SEC F  
 06/18, 09:15AM, TheStreet.com, Tibco Investors Get Restless  
 06/18, 07:25AM, Reuters, Stocks to Watch Friday  
 06/18, 06:22AM, Briefing.com, After Hours Summary: Traded U  
 06/17, 11:24PM, CBS MarketWatch, Stocks to Watch: Stocks  
 06/17, 09:23PM, Reuters, UPDATE - Tibco posts 2nd-quarter p  
 06/17, 05:49PM, Briefing.com, After Hours Summary: Compan  
 06/17, 05:00PM, CCBN, TIBCO Software Earnings Call schedu  
 06/17, 04:38PM, CBS MarketWatch, Tibco swings to a profit  
 06/17, 04:34PM, SEC Edgar, TIBCO SOFTWARE INC Files SEC F

**Tymora DataVU (Tot:40) MWY -- MultiVUs:InsBUY, BUYFT; GotNEWS:10:47a**

GetNEWS | Note | MWY StatsVU+ on 06/23 at 10:47a

AvgDayVol = 501T; AvgDayRng = 0.54; AvgTrdTm = 33s; AvgTrdSz = 666; TV = +11.20T'  
 LevSize = 0.05; AvgLevMove = 6; MaxLevMove = 13; AvgLevRetMove = 2  
 AvgMMSpread = +0.03; ValueArea = 12.51 to 12.60; LevPriTrndStr = 0; MajorLevPTS = -2  
 IntraMktCorr = \$COMPX=0%,20%av \$INDU=0%,21%av \$SPX=0%,34%av \$NDX=0%,17%av  
 TopRankedMMs = NYS-r NAS-r  
 PrvDayTopRankedMMs = NYS=NAS-PSE+  
 KeyPricePoints(<=Bid) = +12.46 12.35 12.25 12.00 11.60  
 KeyPricePoints(>=Off) = 12.55 12.60 12.65 +12.70 12.85 12.95  
 PivPoints = S5=11.99 S4=12.10 S3=12.23 S2=12.34 S1=12.47 P=12.58 R1=12.71 R2=12.82 R3=12.95 R4=13.06 R5=13.19  
 ChartTrends = Day(Op-) 60m- 30m- 15m- 5m- 3m- 1m- (85% BEARISH)  
 LrgBlks = 14.8T@12.49(9:33)=  
 MultiVUs = InsBUY, MonFT; VWAP = +12.53; 200DaySMA = +5.62; 50DaySMA = +9.88; 20DaySMA = +11.61  
 StkFloat = 44.60M; ShrtInt = 6.50M; PctShrt = 14.57%  
 Inside = 12.47 (200) x 12.50 (200); Spread = 0.03; DnBid; Last = 12.50; DayVol = 174T[x0.3]; DayRng = 0.10[x0.2]

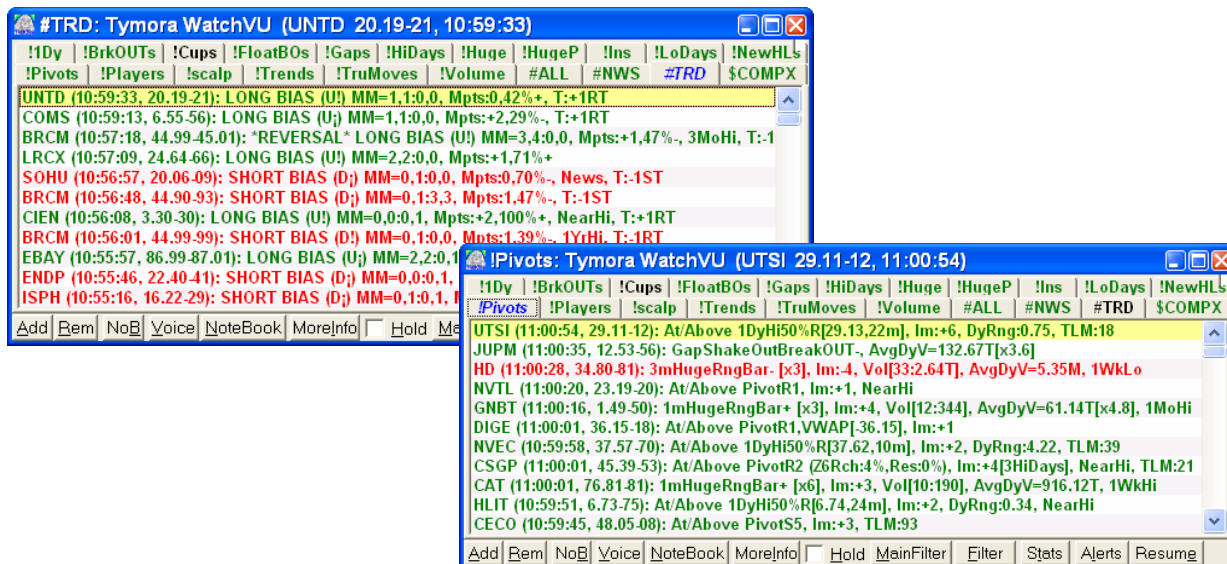
06/23, 07:21AM, Briefing.com, Midway Games business improving, stock overvalued - UBS (MWY) 12:59; UBS notes MWY is still  
 06/22, 05:17PM, SEC Edgar, Insider SUMNER M REDSTONE, BUY 202,000 at \$12.61 on 06/21/2004 [Tot:45,742,095]  
 06/22, 04:53PM, SEC Edgar, MIDWAY GAMES INC Filed a FORM SC 13D/A Filing  
 06/21, 01:40PM, BusinessWire, Newsteam Digest: Summer Water Safety, Mars Rover on a Roll, Bayer and UNEP Establish Glob  
 06/21, 12:35PM, SEC Edgar, Insider SUMNER M REDSTONE, BUY 230,500 at \$12.58 on 06/18/2004 [Tot:45,540,095]  
 06/21, 09:01AM, BusinessWire, Midway Continues Hot Streak as MLB SlugFest: Loaded Touches Home for PlayStation2 and Xbc  
 06/18, 03:04PM, SEC Edgar, Insider SUMNER M REDSTONE, BUY 315,100 at \$12.67/2004 [Tot:45,300,695]  
 06/18, 01:25PM, Reuters, Phyllis Redstone trades in Midway Games shares  
 06/18, 10:45AM, TheStreet.com, Yahoo! Shines Next to Offline Ad Scandal  
 06/18, 10:27AM, SEC Edgar, MIDWAY GAMES INC Filed a FORM SC 13D/A Filing  
 06/17, 04:06PM, TheStreet.com, Eidos Talks Sale After Missing Key Release Date  
 06/17, 03:58PM, SEC Edgar, Insider SUMNER M REDSTONE, BUY 374,600 at \$12.85 on 06/16/2004 [Tot:44,985,595]  
 06/17, 02:56PM, Reuters, Viacom Looks to Advertise in Video Games  
 06/14, 11:04PM, The Wall Street Journal Online, Shari Redstone, Kenneth Cron Join Board at Midway Games

**tymoraPRO DataVU (Tot:58) #EURUSD -- MultiVUs:Currencies; GotNEWS:9:02p -- GotNEWS:293s**

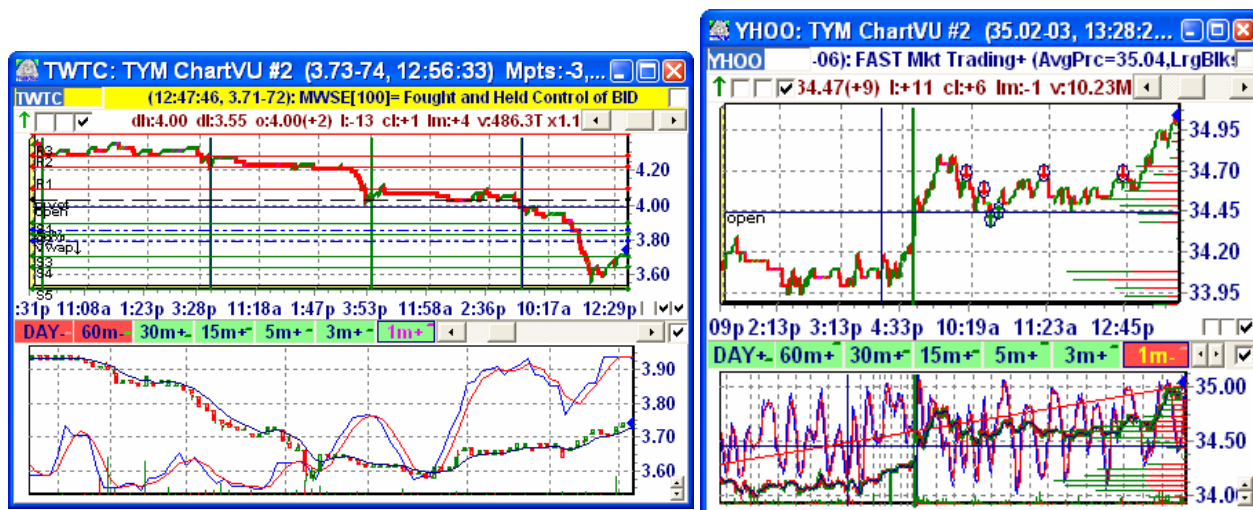
GetNEWS | Note | #EURUSD StatsVU+ on 10/04 at 9:09p

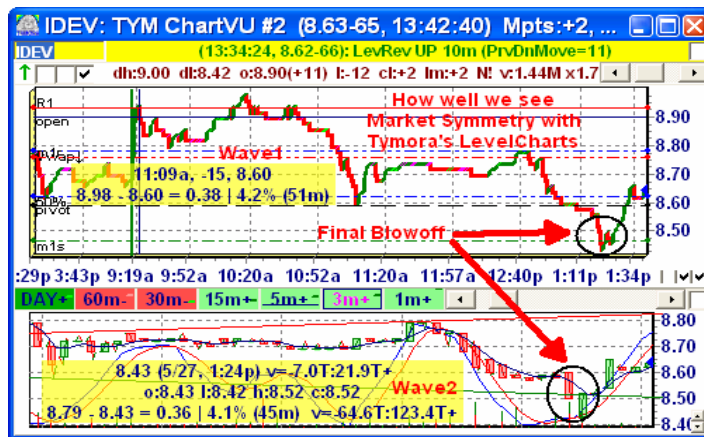
AvgDayVol = 29T; AvgDayRng = 0.009 [0.8%, 46 lev]; AvgTrdTm = 2s; AvgTrdSz = 1; TV = +161  
 LevSize = 0.0002; AvgLevMove = 8; MaxLevMove = 99; AvgLevRetMove = 3; CurLev = +1; LevMove = 0; DayLev+  
 ValueArea = 1.1916 to 1.1936; LevPriTrndStr = 0; MajorLevPTS = -2  
 TopRankedMMs = MBIX-r EXFT-r  
 PrvDayTopRankedMMs = MBIX-EXFT-TEFX+  
 KeyPricePoints(<=Bid) = 1.1918 +1.1902  
 KeyPricePoints(>=Off) = +1.1945 1.2014 1.2026 1.2036 1.2040 1.2077 1.2116 1.2156 1.2196  
 PivPoints = S5=1.1803 S4=1.1829 S3=1.1850 S2=1.1876 S1=1.1897 P=1.1923 R1=1.1944 R2=1.1970 R3=1.1  
 ChartTrends = Day(Op+) 60m+ 30m+ 15m+ 5m+ 3m+ 1m+ (27% BULLISH)  
 MultiVUs = Currencies; VWAP = +1.1920; 200DaySMA = -1.2513; 50DaySMA = -1.2018; 20DaySMA = -1.1590  
 Inside = 1.1921 (1.5T) x 1.1922 (2); Spread = 0.0001; DnBid; Last = 1.1922; DayVol = 4.5T[x0.2]; DayRng = 0.0916

10/04, 08:49PM, AFX News, RPT - US Treasury's close higher; Fed upholds inflation view  
 10/04, 08:47PM, AFX News, RPT - Gold futures close flat, but copper hits another record  
 10/04, 08:43PM, AFX News, RPT - Oil closes at 2-week low; natural gas ends at a record  
 10/04, 08:39PM, Reuters, Nikkei edges up as auto rise offsets steel losses  
 10/04, 08:00PM, AFX News, RPT - Dollar claims near multi-month peaks as Fed in focus  
 10/04, 07:55PM, AFX News, Reserve Bank of Australia leaves official cash rate unchanged at 5.50 pct  
 10/04, 07:18PM, AFX News, UK inflation expectations edge higher in Sept -Lloyds survey  
 10/04, 06:36PM, AFX News, Fed's Fisher says higher inflation is stubborn trend -  
 10/04, 06:33PM, AFX News, Senator seeks to resolve airline pension fight  
 10/04, 06:00PM, Reuters, RPT - GLOBAL MARKETS-US, stocks and oil slide, bonds edge higher  
 10/04, 06:02PM, Reuters, GLOBAL MARKETS-US, stocks and oil slide, bonds edge higher  
 10/04, 06:00PM, Forexnews.com, Dollar Firms, Aussie Steadies  
 10/04, 05:55PM, AP Online, Dollar Loses Some Gains Against Euro  
 10/04, 05:53PM, AFX News, U.S. consumer mood improves slightly  
 10/04, 04:50PM, Reuters, FOREX-Dollar little changed, outlook still positive  
 10/04, 04:29PM, Forexnews.com, Market Consolidates Ahead of Moe Fed Rhetoric  
 10/04, 04:22PM, AFX News, Interior's Norton Slow offshore recovery from storms

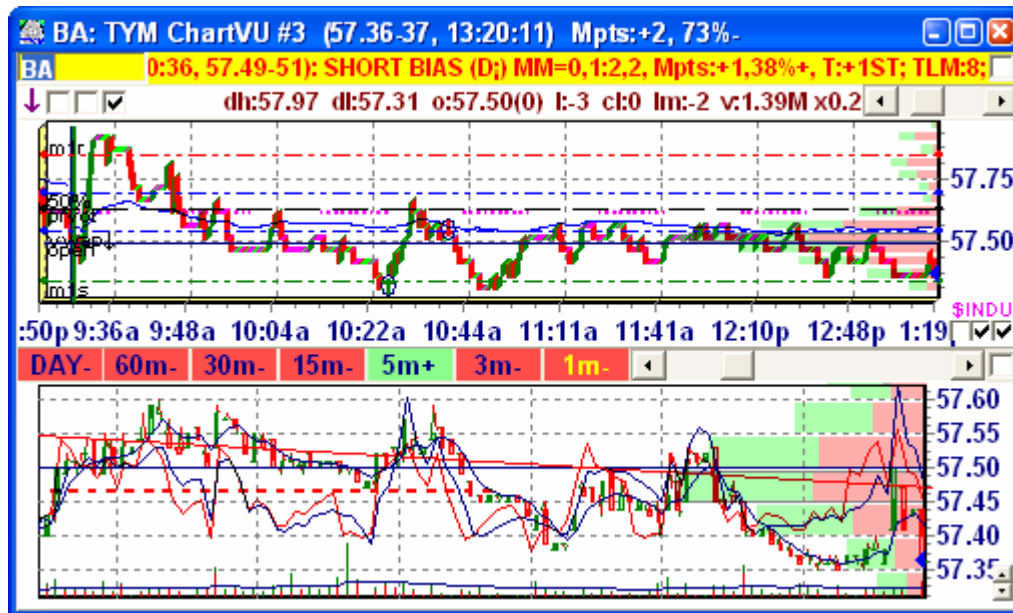


- Proprietary charting routines provide a Non-Lagging, Real-Time representation of current price movement and order flow, while removing most of the underlying “noise”. This can best be described as a unique hybrid of a Point-and-Figure (P&F) chart and a tick chart, with **tymoraPRO**’s automatically calculated “LevelSize” more or less equivalent to a P&F chart’s “box size”. These LevelCharts also consider the up/down volume required to move the asset to the next price level and will also indicate where the key volume battles appear to be taking place. Combined, these features are especially powerful because they seek to isolate the true market’s movement and provide a much clearer view of the underlying trend. Charts can be displayed either in Absolute Price or in Price Extension from the Open of the Day, and also factor in time and volume versus price. A Trader can also watch activity on a 1 minute, 3 minute, 5 minute, 15 minute, 60 minute, and daily basis utilizing the ChartTrends feature, which also provides a weighted easy-to-read display of the current trend on each time frame. It also offers an advanced version of CandleStick Bars that enables traders to see the order of highs and lows inside each trading bar. **tymoraPRO** Traders also have access to Volume by Price features which provide another powerful way to gain insight into where key support and resistance areas exist and where to watch for potential turning points or continuations.





- Additional Proprietary Charting Routines such as a Comparative Relative Strength Index that offers a unique view of whether or not a particular asset is outperforming or underperforming another asset on a day-by-day basis. Also, sophisticated VolumeByPrice / VolumeByLevel features that segregate all up and down volume into levels of trading activity to identify where the strongest support and resistance points may exist based on volume.



- Key Price Levels are calculated and presented to the trader as they are discovered. It is at these prices that “battles” tend to take place that lead to trend reversals.
- Trading Opportunities, Key Prices, and other information can be directly overlaid onto the chart for easy analysis.
- Complete Asset Statistics are Provided for Every Stock in **tymoraPRO**. This enables traders to expeditiously understand the trading dynamics of a particular stock.
- **DepthVU** - Advanced Level II / Depth-of-Book Montage Screens that presents a clear and concise representation of current market activity, along with optional consolidation

of total available size at the top three best bid / offer levels. ECN Book Data is also incorporated into the Montage, and the Top 10 Market Makers are highlighted with ranking and last-move information overlaid. Double-clicking on a particular Market Maker provides quick information on the Market Maker's name, and other important information regarding his currently displayed quote. All colors can be adjusted to maximize the trader's comfort throughout the trading day. Price Levels are optionally grouped by **tymoraPRO**'s calculated Level Size for each asset, so that true underlying movement is easier to identify. This feature is especially powerful since decimalization has taken effect.

TIBX: TYM DepthVU+ #0 (10:27:46, 7.37) QR pts:[+10] -2, 62%-

TIBX (10:27:31, 7.36-37): COWN[3]+ Fought and Held Control of OFFER

↓ 1:17- 1:2 (12-3.4T: 30+57T) It:4m30s o: 6-23T: 0+0 l: 0-0: 1+50T s:0.01

cinn	7.37	0	0	3	UBSW	7.38	0	0	7	7.37	5000	+ofr
T1	7.36	11T	10	2	T1	7.38	65	4	1	7.37	600	+PSE
T2	7.34	69	9	2	T2	7.40	26	10	2	7.36	100	-PSE
T3	7.32	24	7	2	T3	7.42	11	5	2	7.36	400	-PSE
ild1	7.37	7			arc1	7.38	11			7.36	300	-PSE
arc1	7.37	29			ild1	7.38	3			7.37	600	<CIN
cinn	7.37	7	+1	10:27	UBSW3	7.38	1	-7	10:27	7.37	400	<CIN
CRWN	7.37	10	++	10:27	cinn	7.38	3	-1	10:27	7.38	400	+PSE
btrd	7.37	1	++	10:28	TYMPT1	7.38	50	-2	10:27	7.38	200	+PSE
arcx	7.37	29	+2	10:28	arcx	7.38	11	-1	10:28	7.38	50.0T	+ofr
ild2	7.36	44			arc2	7.39	5			7.38	100	+ofr
brul	7.36	1			brul	7.39	2			7.38	100	+ofr
arc2	7.36	9			ild2	7.39	5			7.38	1200	+ofr
PRUS	7.36	1	+4	10:27	brul	7.39	2	+1	10:27	7.38	100	+ofr
COWN2	7.36	1	+5	10:27	arc3	7.40	5			7.38	700	+PSE
TYMPT1	7.36	10	-1	10:27	ild3	7.40	1			7.38	300	+PSE
brut	7.36	1	+1	10:27	CIBC	7.40	1	-5	10:19	7.38	100	+CIN

YMZ5: tymDepthVU+ #3 (21:33:30, 10447.0) G pts:[0] -1, 100%-

YMZ5 (21:33:30, 10447.0): G pts:[0] -1, 100%

↓ 1:2 1:1 (6-6: 7+11) It:28m o: 0-0: 0+0

T1	10446.0	2	T1	10448.0	4	10447.0	1	<(in)
T2	10444.0	8	T2	10450.0	1	10449.0	1	+ofr
T3	10442.0	16	T3	10452.0	6			
T1	10446.0	2	T1	10448.0	4			
T2	10445.0	7	T2	10449.0	1			
T3	10444.0	1	T3	10451.0	4			
T4	10443.0	5	T4	10452.0	2			
T5	10442.0	11	T5	10453.0	9			

#EURUSD: tymDepthVU+ #2 (21:30:09, 1.1928) pts:[0] 0, 77%+

#EURUSD (21:21:34, 1.1921-1921): At:Below SupTnd (30m), At:Below ResTri

↑ 1:1 1:1 (1-1: 20+20) It:55s o: 0-0: 0+0

FXCM	1.1928x2	1	OFXT	1.1929x1	10	1.1928	1	>(in)
T1	1.1928	2	T1	1.1930	1502	1.1928	1	+(1k)
T2	1.1926	2261	T2	1.1932	1	1.1928	1	+(1k)
T3	1.1924	1	T3	1.1934	1	1.1928	1	+(1k)
FXCM	1.1928	1	OFXT2	1.1929	1	1.1928	1	+(1k)
TEFX	1.1928	1	TEFX	1.1930	1	1.1928	1	+(1k)
OFXT2	1.1927	1	NBFX1	1.1930	1500	1.1928	1	+(1k)
NBFX1	1.1927	2260	FXCM	1.1931	1	1.1928	1	+ofr
						1.1928	1	+ofr
						1.1928	1	+ofr
						1.1928	1	+ofr
						1.1928	1	+ofr

↓ +2:1 +2:1 (7-10: 3+6) It:3m40s o: 0-0: 0+0 l: 0-0: 0+0

T1	1110.25	10	T1	1110.50	6	1110.25	1	-bid
T2	1110.25	96	T2	1110.50	21	1110.25	3	-bid
T3	1109.75	999	T3	1110.75	999	1110.25	1	-bid
T4	1109.50	999	T4	1111.5	999	1110.25	2	-bid
T5	1109.25	999	T5	1111.50	999	1110.50	4	+ofr
						1110.50	1	+ofr
						1110.25	1	+ofr
						1110.25	1	-bid
						1110.25	1	-bid
						1110.25	1	-bid

Rt-Clk=Toggle "Top-3" Tier Vol Ctrl-Rt-Clk=Set T&S Filter

Rt-Clk will show any Open Position in Current Asset in Active Account  
 Participant's Volume While at TOP of DepthVU  
 Refresh Cycles of Participant at TOP while trades occurring

Dynamically updating representation of the Trend Strength at the current Price Level, as well as an indication of the Primary Underlying Trend Strength, clearly displayed at the top of each Montage. Order Flow Ratios and other statistics can also be displayed.

- Analyzes Market Maker Activity Across an Entire Sector of Stocks, and Indicates Which Market Makers are Buying or Selling a Particular Sector, if any. Also determines if the Buy or Sell Opportunities issued by **tymoraPRO** can lead to a potential move in a

particular Sector, and also provides an overall Trend Strength indication for the entire Sector.

- Complete Advanced Portfolio Management and Order Execution Screens that can be linked to any computerized order execution back-end system that publishes an API (Application Programming Interface) and is easily compatible with Stocks, Futures, and Foreign Exchange symbols. Orders are repeated back to Trader Verbally, nearly eliminating order entry errors. Multiple orders can easily be created and confirmed in a blink of an eye, with a simple mouse-click or keystroke to transmit or cancel each (or all) open orders.

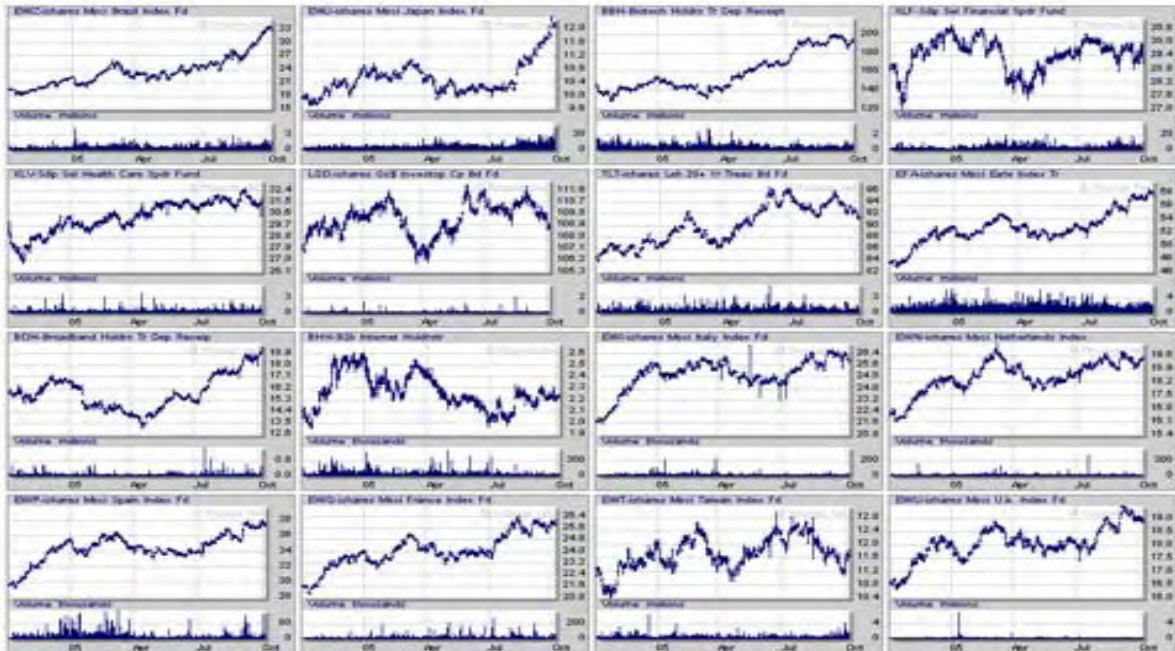
ACCT	ORDER	ASSET	B/S	QTY	PRICE/STP	ROUTE	TYPE	TIF	STATUS	C	T
Trade1	1	MWY	BUY	200	12.25	SMRT		DAY	LIVE	C	I
Trade1		OCOM	SELL	500	67.32	SMRT		DAY		C	I
Trade1		DYAX	BUY	1000	11.74	SMRT		DAY		C	I

QUANTITY	PRICE/STOP	ROUTE	TYPE	TIF
200	12.25	SMRT		DAY
800	12.40	SMRT		DAY
700	12.35	SMRTE	MID	IOC
600	12.30	ARCA	BID	15
500	12.25	ARCX	BID+	30
400	12.20	ATTN	OFR-	60
300	12.15	BRUT	OFR	90
200	12.10	BTRD	OFR+	180
100	12.05	DOT	RRID	1H

Date	Time	Qty	Asset	EntryPrc	ExitPrc	ExecutionDetails	Profit	MaxPP	MaxDD	TT
05/25	12:44p	500	DYAX	9.62	10.56	Tkt#3 [DYAX]: ISLD-	\$463.50	\$515.00	\$0.00	9m
05/25	12:53p	100	DYAX	10.09	10.43	Tkt#4 [DYAX]: ISLD-	\$28.80	\$64.00	(\$5.00)	16m
05/25	12:53p	300	DYAX	10.10	10.43	Tkt#4 [DYAX]: ISLD-	\$99.00	\$189.00	(\$18.00)	16m
05/25	12:53p	100	DYAX	10.10	10.43	Tkt#4 [DYAX]: ISLD-	\$31.70	\$189.00	(\$18.00)	16m

- MultiVU provides real-time sorting by several parameters including net change over multiple asset baskets or “Watch” portfolios, and the Chart Montage feature creates a webpage of either daily or intraday charts of all assets in a MultiVU group for a quick visual overview of all assets in the group. Assets can also be sorted by sector.

**tymoraPRO DAILY Chart Montage (ETFs)**  
Sorted by Percentage Net Change (from Previous Close)



- Historical Insider Trading Statistics Available by Double-Clicking on an Insider Trading News Alert (or from StatsVU GetNEWS). Shows trade performance from 1 week to 6 month after each initial transaction over all available history to determine potential future predictive ability and merit of insider.

**tymoraPRO Insider PostTrade Statistics for STEEL PARTNERS II LP**  
tymoraPRO Home Page

AGL	BUY	000000	Insider: STEEL PARTNERS II LP	BUY 37,000 @ \$17.94 (N100300005) (V1011847260) (LowPland 83M)	Shares	Price	1WkLo	1WkHi	1MoLo	1MoHi	3MoLo	3MoHi	6MoLo	6MoHi
BUY	STEEL PARTNERS II LP	WEFN	20050022	44100	12.53	2.2%	7.0%	0.0%	0.0%	0.0%	0.0%	0.0%	0.0%	0.0%
BUY	STEEL PARTNERS II LP	WEFN	20050010	5768	12.10	-0.6%	15.6%	0.0%	0.0%	0.0%	0.0%	0.0%	0.0%	0.0%
BUY	STEEL PARTNERS II LP	WEFN	20050707	9275	11.78	2.1%	8.1%	0.0%	8.1%	0.0%	0.0%	0.0%	0.0%	0.0%
BUY	STEEL PARTNERS II LP	WEFN	20050701	600	11.13	2.6%	16.8%	2.6%	16.8%	0.0%	0.0%	0.0%	0.0%	0.0%
BUY	STEEL PARTNERS II LP	WEFN	20050629	25	10.88	-3.5%	18.6%	-3.5%	18.6%	0.0%	0.0%	0.0%	0.0%	0.0%
BUY	STEEL PARTNERS II LP	WEFN	20050628	500	10.88	-3.5%	5.7%	3.5%	19.5%	0.0%	0.0%	0.0%	0.0%	0.0%
BUY	STEEL PARTNERS II LP	WEFN	20050620	152	10.50	-1.0%	4.3%	-1.0%	23.8%	-1.0%	20.6%	0.0%	0.0%	0.0%
BUY	STEEL PARTNERS II LP	WEFN	20050613	150	10.40	0.0%	0.0%	0.0%	25.0%	0.0%	29.9%	0.0%	0.0%	0.0%
BUY	STEEL PARTNERS II LP	WEFN	20050603	1725	10.30	1.0%	2.9%	1.0%	0.3%	1.0%	0.1%	0.0%	0.0%	0.0%
BUY	STEEL PARTNERS II LP	WEFN	20050602	7900	10.70	-1.7%	2.9%	-3.7%	2.8%	-2.7%	20.2%	0.0%	0.0%	0.0%
BUY	STEEL PARTNERS II LP	WEFN	20050627	2572	10.25	-1.0%	3.4%	-1.0%	5.9%	-1.0%	30.4%	0.0%	0.0%	0.0%
BUY	STEEL PARTNERS II LP	WEFN	20041025	2207	7.90	-2.0%	8.0%	4.0%	8.0%	-11.2%	0.0%	0.0%	0.0%	0.0%
BUY	STEEL PARTNERS II LP	WEFN	20041008	1006	7.60	-2.0%	6.4%	2.6%	8.4%	-11.2%	8.4%	0.0%	0.0%	0.0%
BUY	STEEL PARTNERS II LP	WEFN	20041001	26400	2.47	-0.4%	7.3%	0.6%	9.7%	-10.1%	9.7%	-10.1%	9.7%	9.7%
BUY	STEEL PARTNERS II LP	WEFN	20040930	43690	2.40	0.7%	10.2%	0.7%	12.7%	-7.6%	12.7%	-7.6%	12.7%	12.7%
BUY	STEEL PARTNERS II LP	WEFN	20040929	399400	2.40	0.0%	10.4%	0.0%	12.9%	-7.5%	12.9%	-7.5%	12.9%	12.9%
BUY	STEEL PARTNERS II LP	WEFN	20040928	111600	2.40	0.0%	10.4%	0.0%	12.9%	-7.5%	12.9%	-7.5%	12.9%	12.9%
BUY	STEEL PARTNERS II LP	WEFN	20030115	43800	2.47	-4.0%	0.0%	-4.0%	8.5%	-30.4%	8.5%	0.0%	0.0%	0.0%
BUY	STEEL PARTNERS II LP	WEFN	TOTAL	699481	3.40	-0.9%	8.1%	-1.7%	12.6%	-3.2%	18.3%	-8.2%	12.1%	12.1%
BUY	STEEL PARTNERS II LP	UC	20050707	3700	34.92	0.2%	4.7%	-0.5%	9.7%	0.0%	0.0%	0.0%	0.0%	0.0%
BUY	STEEL PARTNERS II LP	UC	20050706	20000	34.91	-0.1%	4.7%	-0.4%	9.7%	0.0%	0.0%	0.0%	0.0%	0.0%
BUY	STEEL PARTNERS II LP	UC	20050627	26600	34.08	1.7%	6.5%	1.5%	12.4%	-6.5%	12.4%	0.0%	0.0%	0.0%
BUY	STEEL PARTNERS II LP	UC	20050624	16300	34.64	-2.8%	5.1%	-2.8%	10.9%	-7.8%	10.9%	0.0%	0.0%	0.0%
BUY	STEEL PARTNERS II LP	UC	20050623	4500	34.93	-3.9%	3.9%	-3.9%	9.7%	-8.8%	9.7%	0.0%	0.0%	0.0%
BUY	STEEL PARTNERS II LP	UC	20050615	35100	34.90	0.9%	7.0%	3.8%	7.0%	0.7%	9.7%	0.0%	0.0%	0.0%
BUY	STEEL PARTNERS II LP	UC	20050614	600	34.75	-0.1%	7.5%	3.4%	7.5%	8.3%	10.2%	0.0%	0.0%	0.0%
BUY	STEEL PARTNERS II LP	UC	20050607	8800	34.25	0.3%	2.7%	2.0%	9.0%	-7.0%	11.8%	0.0%	0.0%	0.0%
BUY	STEEL PARTNERS II LP	UC	20050602	5900	34.70	-1.7%	2.0%	-3.2%	7.6%	-3.3%	10.4%	0.0%	0.0%	0.0%
BUY	STEEL PARTNERS II LP	UC	20050531	14100	34.89	-1.7%	2.0%	-3.2%	7.6%	-3.3%	10.4%	0.0%	0.0%	0.0%
BUY	STEEL PARTNERS II LP	UC	20050526	12400	34.43	-0.3%	2.1%	1.0%	8.5%	-2.0%	11.2%	0.0%	0.0%	0.0%
BUY	STEEL PARTNERS II LP	UC	20050525	9000	34.25	-0.7%	2.4%	0.9%	8.7%	-2.4%	11.5%	0.0%	0.0%	0.0%
BUY	STEEL PARTNERS II LP	UC	20050519	24100	35.94	-0.4%	3.1%	-0.4%	10.3%	-0.9%	13.2%	0.0%	0.0%	0.0%
BUY	STEEL PARTNERS II LP	UC	20050513	95000	32.05	1.0%	6.9%	1.0%	10.5%	1.0%	10.5%	0.0%	0.0%	0.0%
BUY	STEEL PARTNERS II LP	UC	20050512	59500	32.08	-0.7%	6.7%	0.7%	10.3%	-0.7%	10.4%	0.0%	0.0%	0.0%
BUY	STEEL PARTNERS II LP	UC	20050511	89900	32.08	-0.8%	6.9%	-0.8%	10.4%	-0.8%	10.4%	0.0%	0.0%	0.0%
BUY	STEEL PARTNERS II LP	UC	TOTAL	406590	31.15	0.6%	4.6%	1.5%	9.4%	-1.1%	12.8%	0.0%	0.0%	0.0%

- Account Handler provides automatic order routing to the best market center, and Trader can see which market centers are currently available and active and can block certain routes from the SMART routing feature through a click of the mouse. Account Handler can also simulate off-floor STOP / STOP-LIMIT orders and Reserve orders, to name a few. For back-ends that do not offer Cancel/Replace features, the Account Handler can simulate Cancel/Replace and provides a single **tymoraPRO** Order ID for order so



that it can easily be rolled-up and identified on the back-end. New routes can easily be added as they become available once they are added to the firm's back-end environment.

- API available to enter and manage orders via **tymoraPRO**'s advanced front-end environment for automatic execution of customized trading systems and other third-party applications.
- **tymoraPRO** also has a **complete built-in Scripting Language** known as **tymoraScript**, which is a Pascal-like Scripting Language (*complete with Debugger*) that interfaces directly into **tymoraPRO** and, depending on level of access, enables traders to interface various **tymoraPRO** features and easily create automated trading systems or add additional scanning or functional forms within **tymoraPRO**. Also offers complete access to order execution in both live or training modes.
- **tymoraPRO** provides in-depth connection statistics in order to assist in monitoring and diagnosing network problems or other potential performance issues. **tymoraPRO** also implements sophisticated scanning methods to clean incoming data to minimize stuck quotes and ECN Order Book Bids or Offers.
- Create Weekly, Daily, Intraday, or Volatility Chart Montages based on all assets in a particular Portfolio or MultiVU display, along with position and asset data on any assets in a particular portfolio for quick and easy monitoring and review of an entire group of stocks.
- **tymoraPRO** is currently compatible with market data from eSignal, Townsend RealTick, QCharts, and several broker-dealer feeds as well. **tymoraPRO** can also run seamlessly with other Charting, Trading Packages, and Order Execution Applications.
- Highly advanced training and simulation technology available, which enables traders to play back Level 2 data at any speed. Montage action can also be paused or reversed (**TYMORA RePLAY**).
- Advanced Real-Time Simulated Trading Environment allows accurate simulation of trading results in order to gauge a trader's abilities without risking live capital. Orders will only fill if there was a high probability that the execution could have occurred.
- **tymoraPRO** has load-balancing features built-in for scalability and **tymoraPRO**'s front-end client can resolve servers back via Dynamic DNS to multiple Internet Hosts for additional reliability. It operates over standard TCP/IP and utilizes a proprietary encryption and compression protocol to communicate. As such, it can be run reliably and securely over the Internet. **tymoraPRO** is also Multi-Screen Compatible.

**FOR ADDITIONAL MATERIALS, OVERVIEWS, VIDEOS, COMPLETE PRODUCT MANUAL, AND DEMOS, PLEASE VISIT:**

[www.yourika.com/tymora](http://www.yourika.com/tymora)

### 8-89no LU 3.21no L 10.81h GE 30.94-96nh KFT 29.8

SNWL: TYM DepthVU+ #0 (12:46:21, 6.97) OR pts: [7] +1.77%+

bid	ask	off	bid	ask	off	bid	ask	off
6.96	7.00	0	6.97	7.00	0	6.97	7.00	0
6.96	7.00	0	6.97	7.00	0	6.97	7.00	0
6.96	7.00	0	6.97	7.00	0	6.97	7.00	0

### SNWL: TYM ChartVU #2 (6.96-97, 12:46:37) Mpts: +1...

### SINDU: TYM ChartVU #0 (10007.33, 12:47:21)

### DYAX: TYM DepthVU+ #1 (12:47:36, 10.59) OR pts: [0] -1.85% N!

DYAX (12:47:36, 10.70-75): High: MoveUp [+17%], AvgDayV=100x765281

bid	ask	off	bid	ask	off	bid	ask	off
10.60	10.70	0	10.60	10.70	0	10.59	10.70	-0.01
10.60	10.70	0	10.60	10.70	0	10.59	10.70	-0.01

### DYAX: TYM ChartVU #3 (10.59-64, 12:47:30) Mpts: -1...

### SINDX: TYM ChartVU #1 (1424.76, 12:47:13)

### LVL: TYM DepthVU+ #2 (12:45:37, 3.11) OR pts: [2]

LVL (12:45:37, 3.19-11): At/Below PrevLWV [+3.11]

bid	ask	off	bid	ask	off	bid	ask	off
3.10	3.12	0	3.10	3.12	0	3.10	3.12	0
3.10	3.12	0	3.10	3.12	0	3.10	3.12	0

### LVL: TYM ChartVU #2 (12:45:37, 3.11) OR pts: [2]

### 500 DYAX - Tymora Order Manager (Trade): Long 100 DYAX 10.63 \$54...

Open Positions: 2 Longs, 0 Shorts, NetProf=\$265 DayNetProf=\$1,099

SELL 500 DYAX 10.70 (SMRT)

QUANTITY	PRICE/STOP	ROUTE	TYPE	IF
500	10.70	SMRT	DAY	

### !Huge Tymora WatchVU (BRCM 41.36.39, 12.46.20)

!DY (12:47:37, 31.54.55): SHORT DIAS (D) MM=0.02.3. Mpts: +2.35%+

!L10: Tymora 'LIVE' (05/25/2004, 12:47:39 EDT) T- L- E-